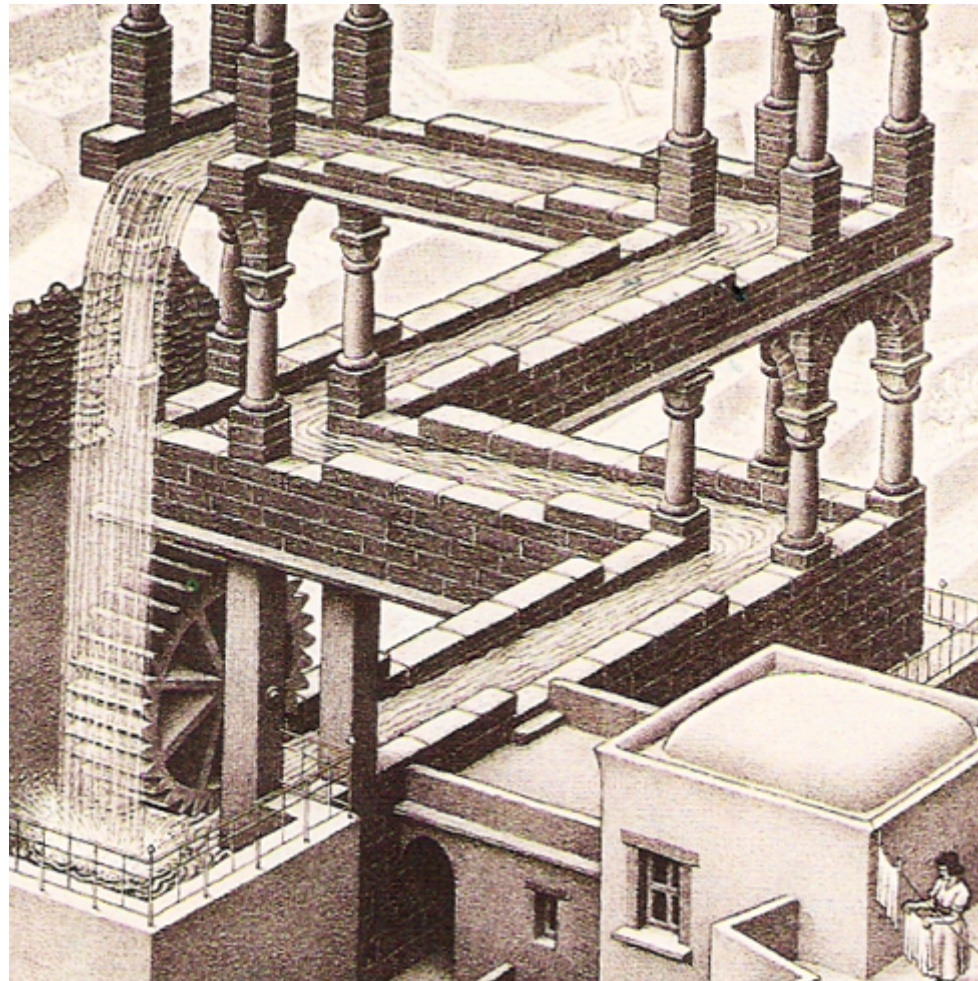




Lessons from Preston GUILD.



Trams for Leeds & London ?

APPLRG 18th Jan. 2017 Prof. Lewis Lesley & Stewart Saunders



Trams are good...
BUT ... NAO “Poor value”



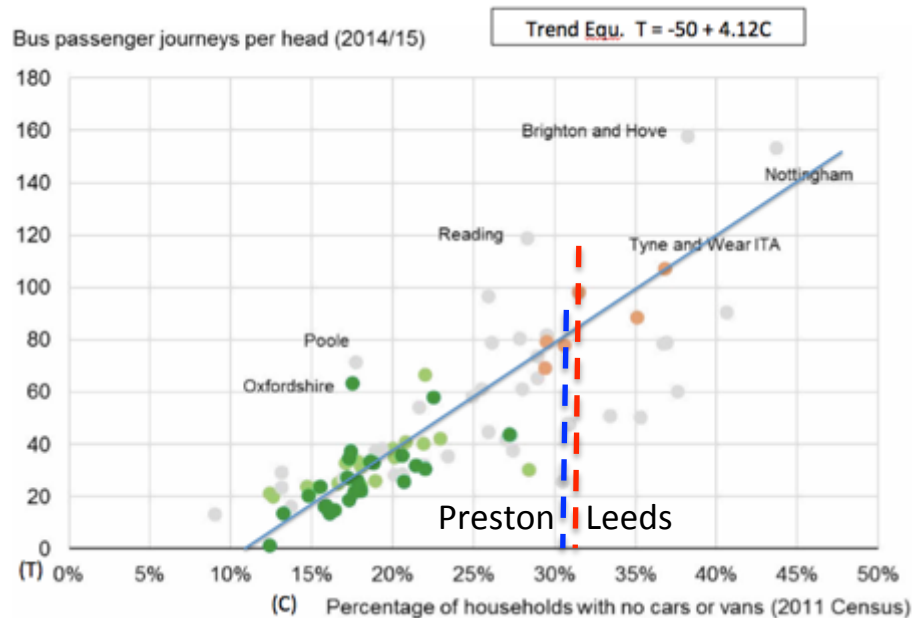
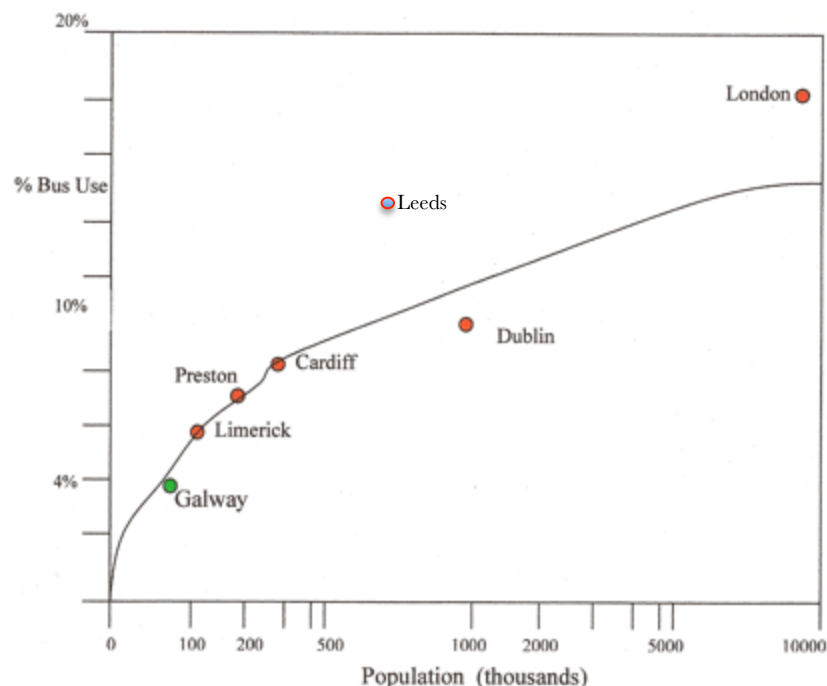
‘Green light for Light Rail’ ?



And hospitals, schools, houses are better ?



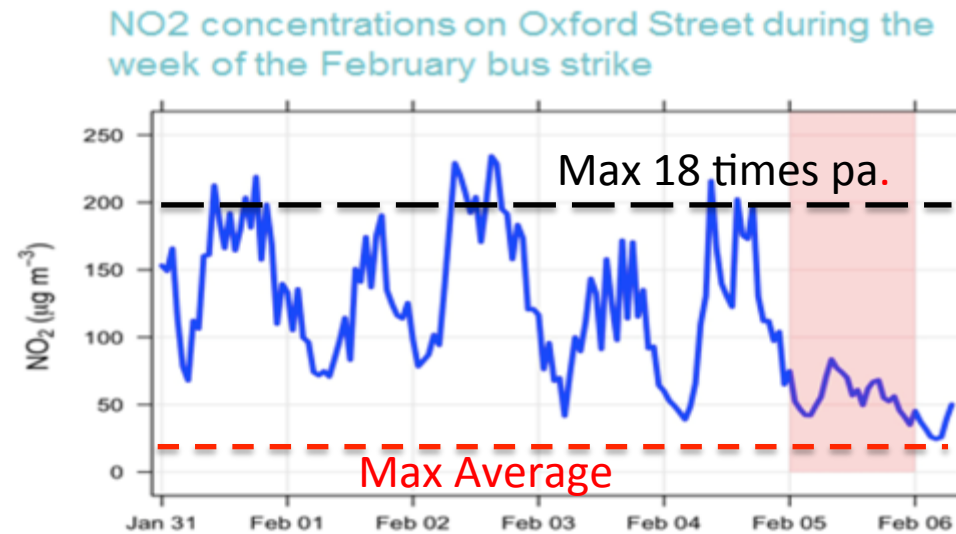
Buses are best ?



Runcorn Busway- 50% of trips ?



Toxic traffic pollution kills



Tracks fail before opening !





A tramway @ £300million tax grant



Benefits less people than 2 hospitals
Or 12 schools or 3500 houses ?



And construction can be socially
and economically disruptive.

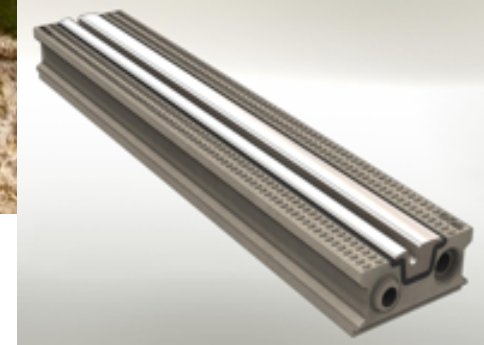
Innovation reduces costs

- LR55 track

STAGE One : Grooving road 200mm x 400mm



STAGE Two : Glue LR55 beams in road



- OHL

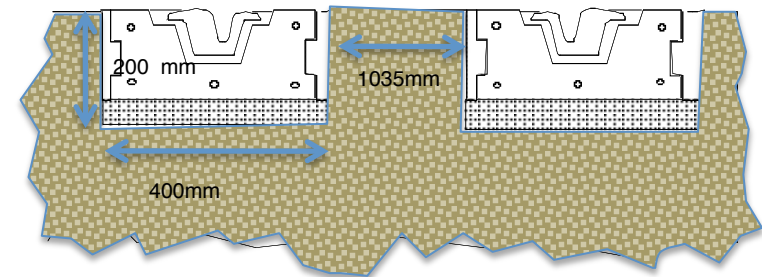


Carnforth 2004



Ashton extension 2014

STAGE Three : Glue LR55 rails into beams



- City Class Tram



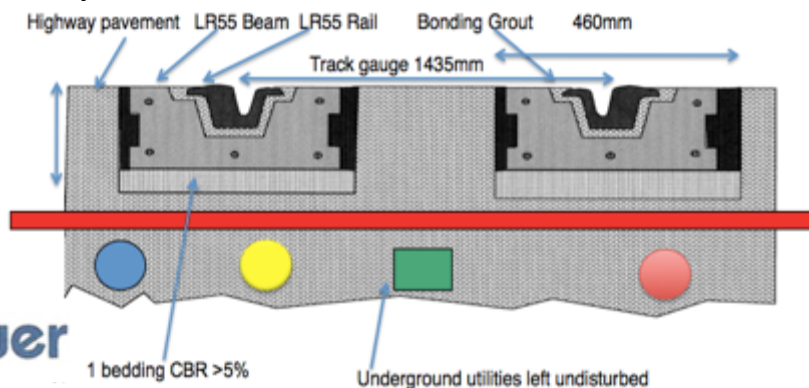
- + 200 pax
- + 29m long
- + 100% flat flr
- + 22tonnes
- + 1kWh/km



Preston



Build only what is needed



Trampower

a new start

- Commercial Approach
- Planning Application
- Private funds
- LR55 tracks
- City Class Trams
- Simple OHL



Lowering costs:

One pass trencher



- * LR55 street track
- * Faster installation
- * Moving front
- * >100m per week
- * One rail laid at a time
- * City Class tram



- System fully depreciated
- Assets repaired/renewed from revenue



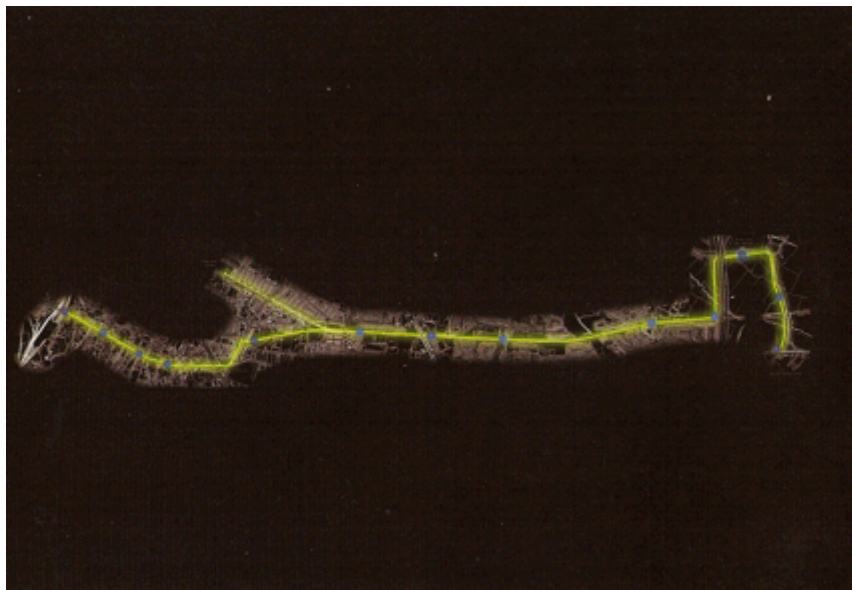
Lower cost longer life Lr55 track.

- Over 20 years in Sheffield without maintenance





Getting people on side



THE GUILD LINE: Tram coming your way Preston Trampower

1st Floor, 48 Watling Street Road,
Fulwood, Preston PR2 8BP



Preston Trampower:

People will soon be able to use a convenient method of travelling, meeting the demands of the City of Preston. Trampower will ease congestion and parking problems, and link to many areas of the City.

The first GUILD Line is due to open in 2012, allowing people to cross the city with ease. Preston Trampower will help residents, workers, shoppers and visitors to get about Preston quickly and easily.

"Preston Trampower coming your way"

Contact: Burnaby Villa, 48 Watling Street Road, Fulwood,
Preston, PR2 8BP
T: 01772 713900
E: mail@prestontrampower.co.uk
W: www.prestontrampower.co.uk

The Guildline 2012 a tram every 6minutes, everyday all year The Guild Line is the first of a proposed four-line tram network, which will connect many key parts of the city and Park & Ride stations outside the city centre. It will also go to the railway station, retail parks, hospitals, football stadium and the University.

The Guild Line team is working with Preston City Council and Lancashire County Council to deliver an integrated project that improves the environment and status of the city.

Benefits

- Faster journeys
- Less Waiting
- Comfortable rides
- Easy access
- Wheelchairs and prams welcome
- Space for shopping
- Safe and convenient
- No parking tickets or hassles
- Powered by renewable energy, like wind and solar power Network will enhance existing cycleways and foot paths, giving cleaner and greener transport.

Places served

- Fishergate (Centre)
- Railway Station
- St. George's Centre
- Town Hall
- Guildhall
- Church Road
- Deepdale Road
- Deepdale Mill Street
- Skeffington Road (PNE)
- West View Leisure Centre
- Deepdale Retail Park
- Gamull Lane
- Bluebell Way (Park and Ride)
- Redscar Business Park

Trampower



The benefits ?

- Big investment in Preston
- Significant improvement to public transport
- Attract car trips to tram
- Less traffic, congestion and pollution
- Boosting confidence in local economy





What this means to Preston



Fishergate 1933

Fishergate Shared Space 2019



Can this work else where ?

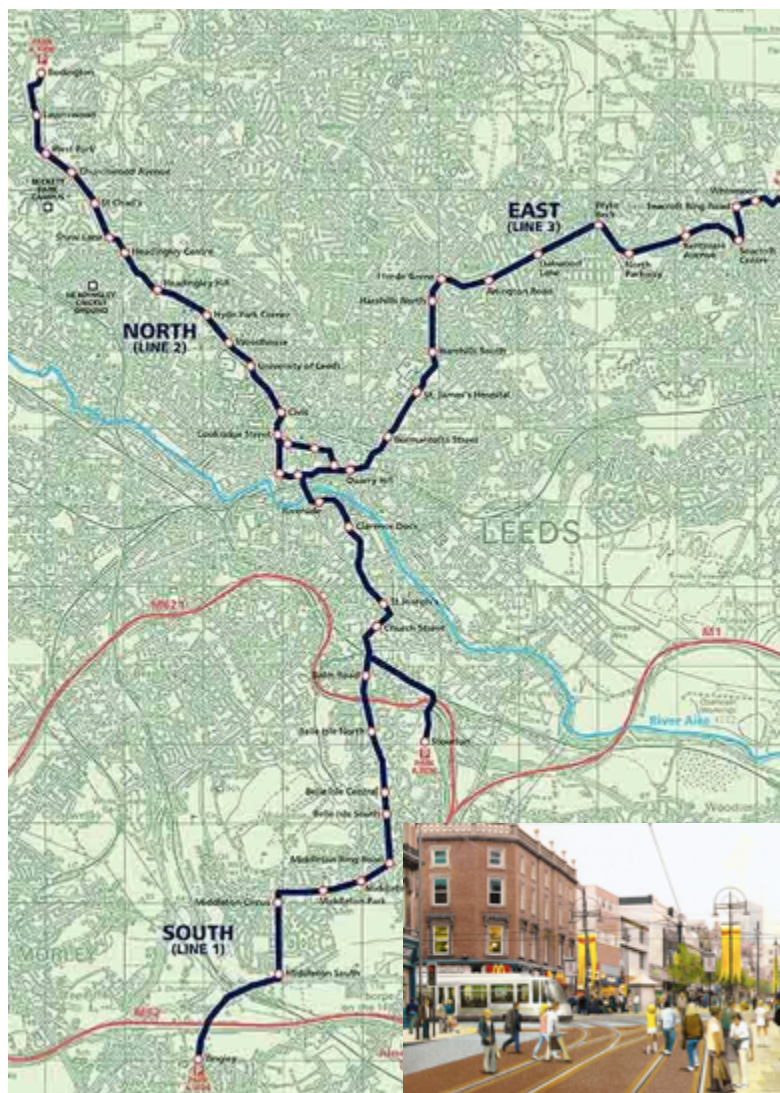


Leeds leads !

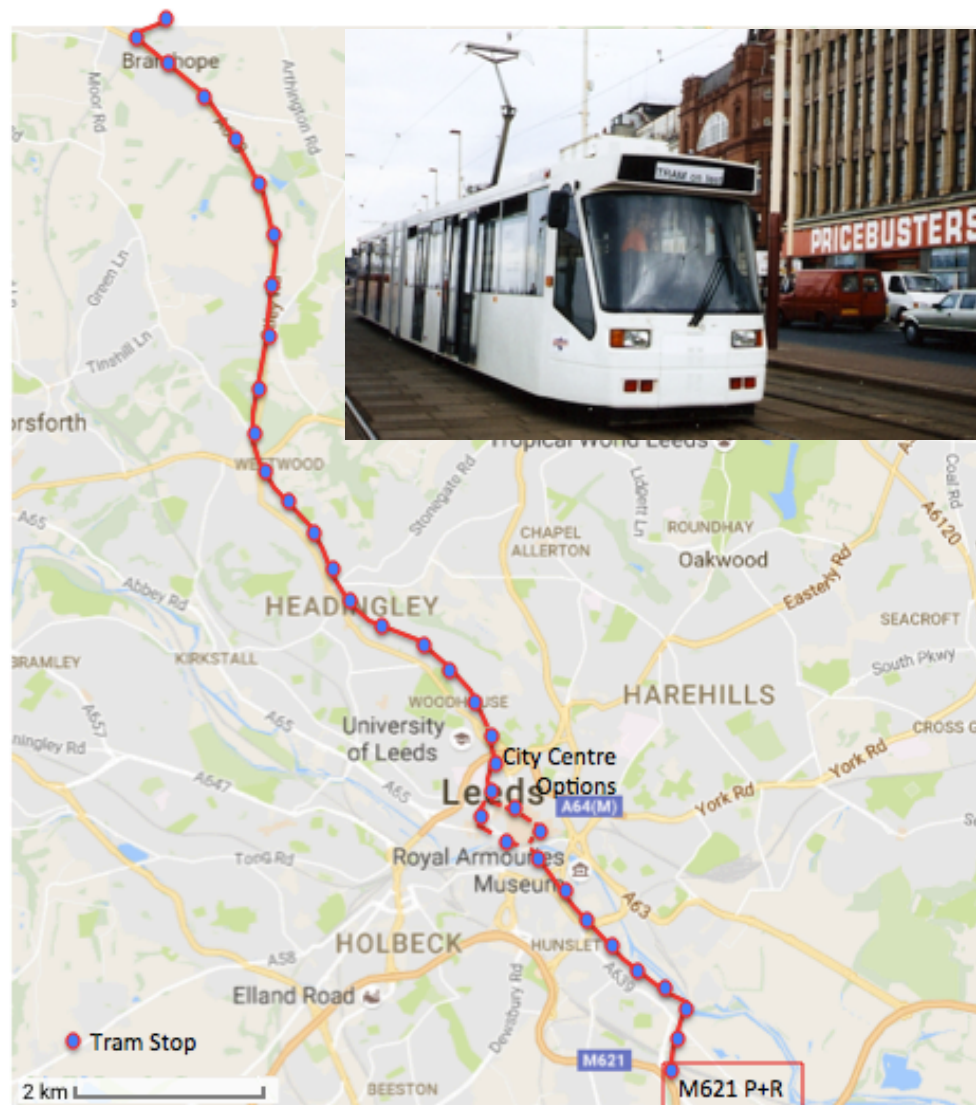




Supertram 2 (2003)



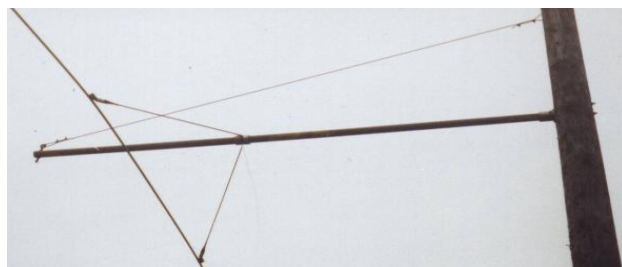
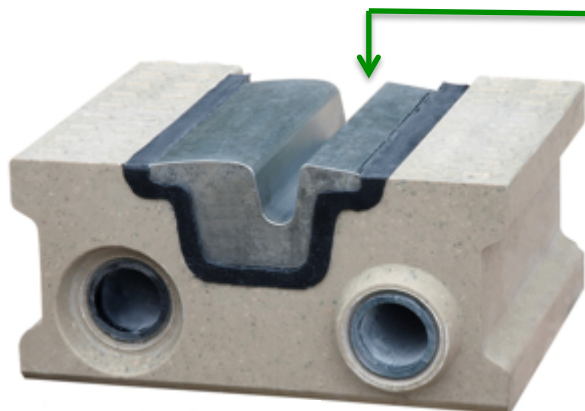
Supertram 3





Supertram 3 CAPEX

Item	Supertram 2 [2003] (£million)	SUPERTRAM 3 [2016] (£million)
Track	150	70
Utilities	100	30
Trams	80	20
Other	70	20
TOTAL	400	140
Route length (km)	28	14
Cost (£million)/km	15	10



Trampower



Procurement ?

* Public sector

- Less innovation –
 - 3 previous contracts rule –
 - how can this be innovative
- Will enough contractors bid ?
- Loaded bids to cover public sector risks ?



* *Private sector*

- *Innovation in procurement, like Preston GUILD*
- *All risks taken, operational viability proved.*
- *Other financially viable lines added later*
- *Can be bought by Council, as Croydon Tramway*

A Partnership for Leeds ?



Who benefits ?

- Private sector promotes
 - raises the funds
 - Constructs
 - operates
- Public sector
 - Approves (planning permission)
 - Can buy out later, then operates ?
- The community
 - Gets many benefits
 - Acceptable travel choices
 - Less toxic air, illness and premature deaths
 - Less noise and safer streets



Trams for London ?

you must be choking !

- Toxic air pollution kills 9000pa in London
- Buses in Inner & Central London worst
- All traffic emits NO_x and PM₁₀





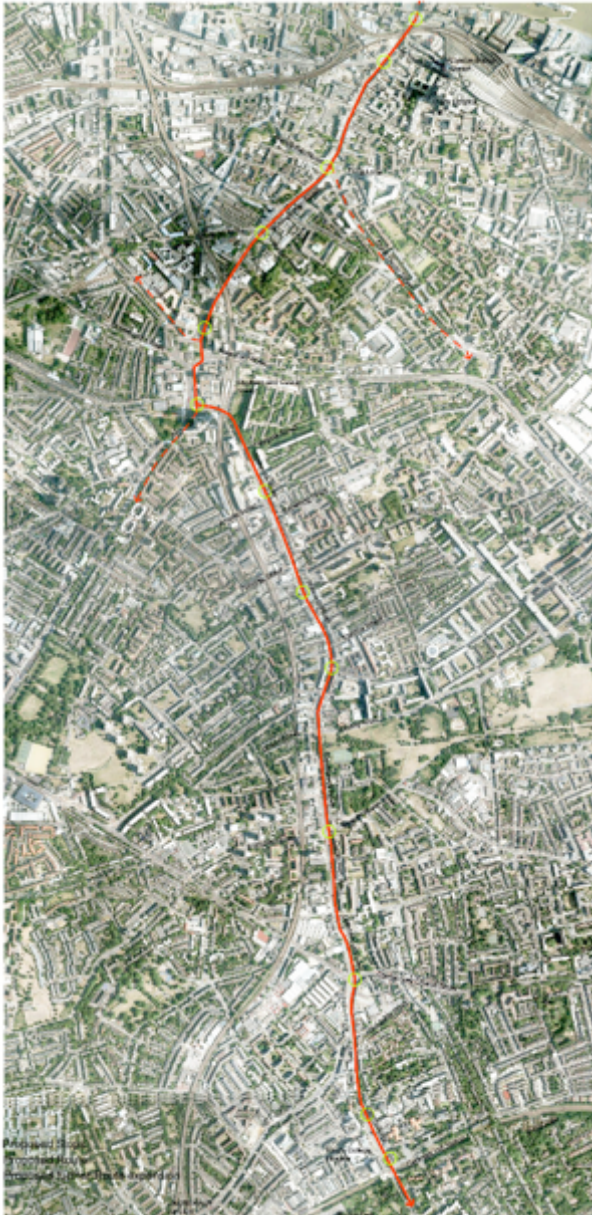
- West London Tramway
- Cross River Tramway
- Oxford Street Tramway
- Croydon Tramlink



*Southwark
Supertram*

*Camberwell
Green Montage*

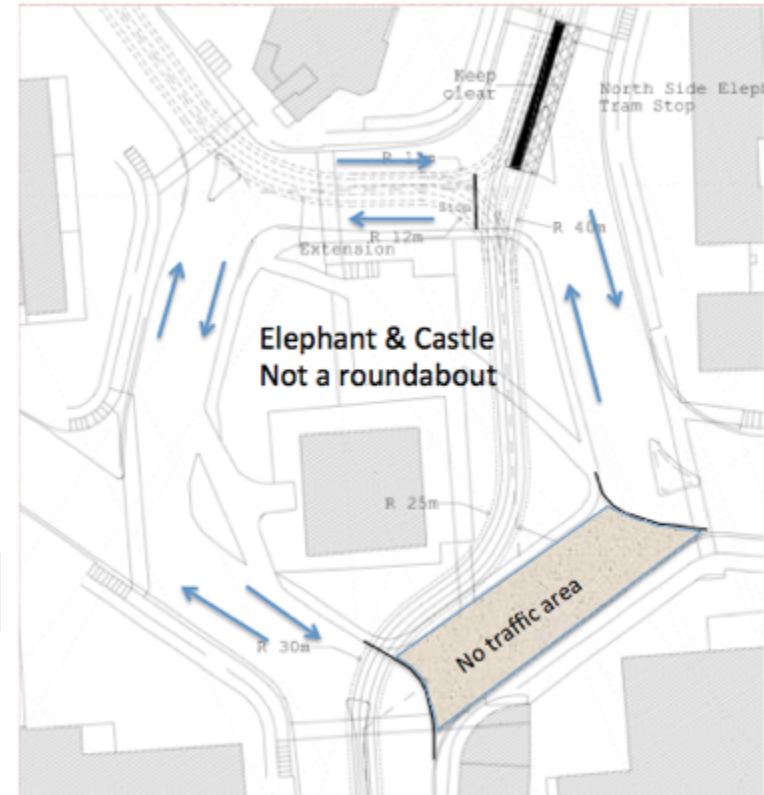
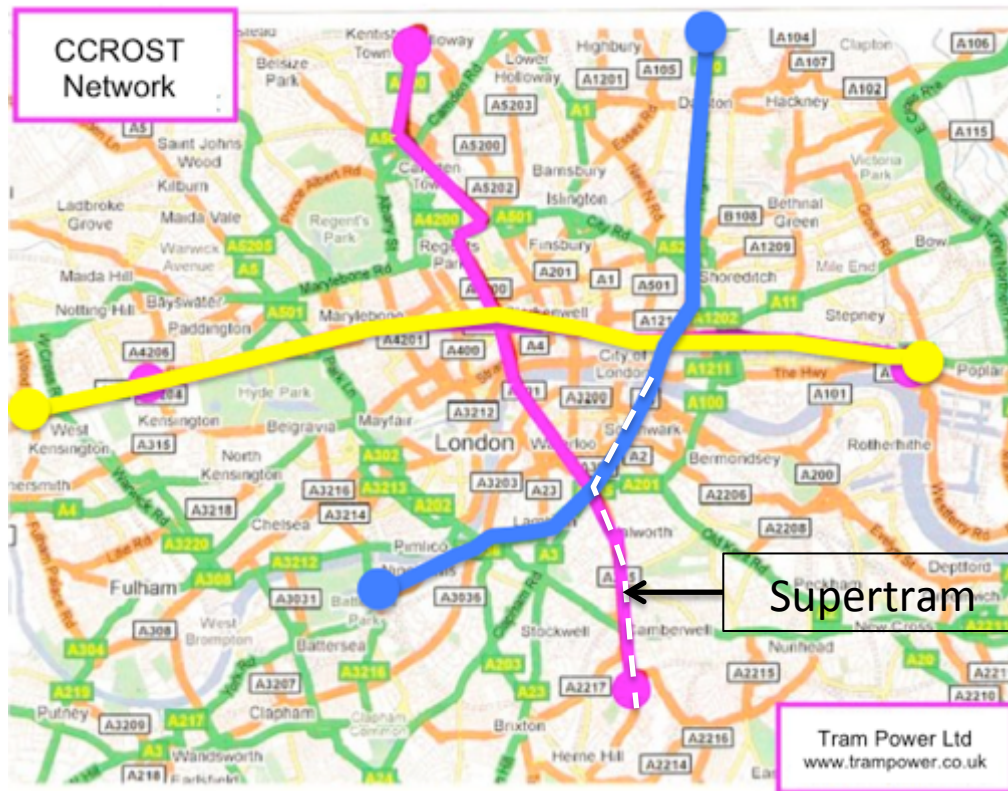




Southwark Supertram

- Southwark Borough Transport Plan
 - Unreliable and overcrowded buses
 - Traffic congestion and air pollution
 - Car trips 50% more than public transport
- London Transport Plan: need to
 - Reduce congestion and pollution
 - Increase use of public transport
 - Relieve overcrowded tube lines
- GLA Bus Report. (over crowding)
 - 9/10 most over crowded were tram routes
 - 6/10 are in Southwark

a starter line for London ?



Prof. Goodwin: Evidence to Transport Committee. 'road space for trams = less traffic'





Conclusion

- People like trams (c 80% support ?)
- Commuters leave cars at home, or Park+Ride the tram
- Reduces traffic (trams get people out of cars !)
 - Complementary management
 - Tram priorities
 - Prevent suppressed car trips clogging roads
- Less congestion
- Better air quality
- Improves access and connectivity
- Raises investor confidence for other projects